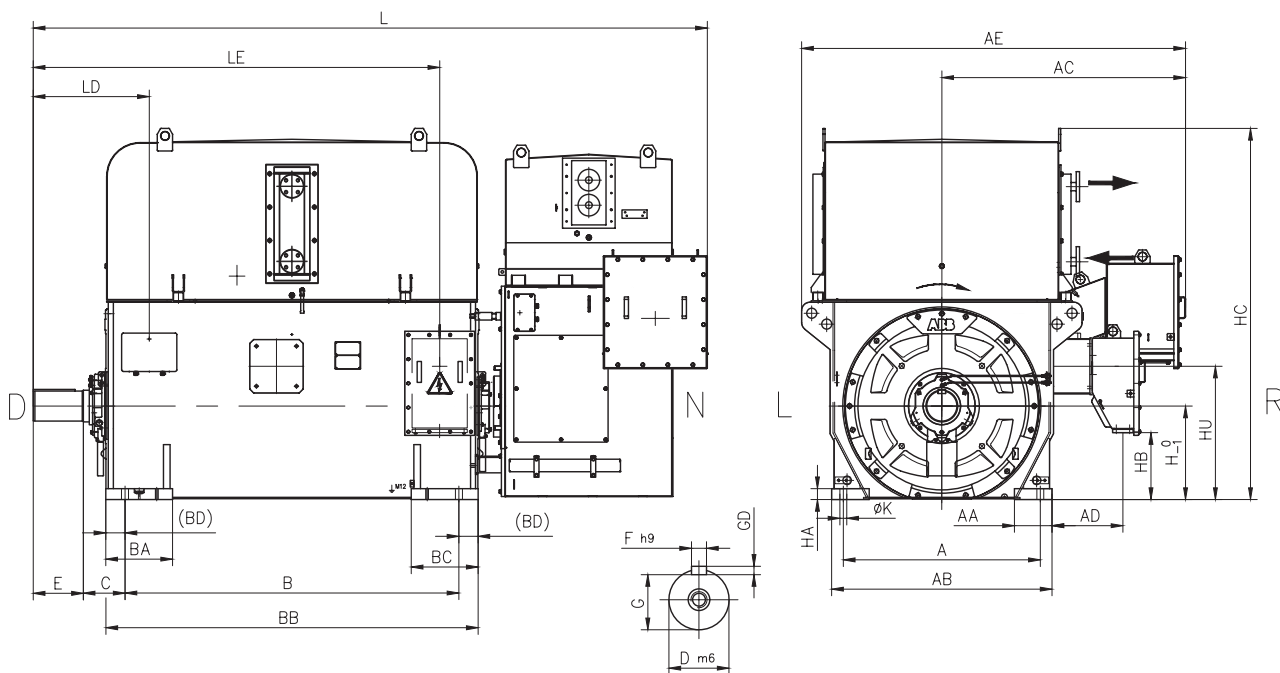


Modular slip-ring motors, type NMK

Dimension drawings

IM 1001, IC81W / IP55



NMK	Voltage	Poles	A	B	C	D	E	F	G	H	K	L	AA	AB	AC	AD	AE
560L	1<U≤6.6 kV	≥4	1180	2000	250	180	300	40	165	560	42	3875	225	1320	1460	425	2305
560L	6.6<U≤11 kV	≥4	1180	2000	250	180	300	40	165	560	42	3875	225	1320	1460	507	2305
630L	1<U≤6.6 kV	≥4	1400	2240	250	200	350	45	185	630	42	4165	200	1500	1550	421	2485
630L	6.6<U≤11 kV	≥4	1400	2240	250	200	350	45	185	630	42	4165	200	1500	1550	503	2485
710L	1<U≤6.6 kV	4	1600	2500	560	220	350	50	203	710	42	5100	200	1700	1910	795	2980
710L	6.6<U≤11 kV	4	1600	2500	560	220	350	50	203	710	42	5100	200	1700	1910	795	2980
710L	1<U≤6.6 kV	≥6	1600	2500	355	220	350	50	203	710	42	4895	200	1700	1910	795	2980
710L	6.6<U≤11 kV	≥6	1600	2500	355	220	350	50	203	710	42	4895	200	1700	1910	795	2980

NMK	Voltage	Poles	BA	BB	BC	BD	GD	HA	HB	HC	LD	LE	HU	D-end bearing	N-end bearing
560L	1<U≤6.6 kV	≥4	400	2230	400	115	25	65	400	2225	695	2435	798.5	6038M/C3+NU1038M/C3	NU1038M/C3
560L	6.6<U≤11 kV	≥4	400	2230	400	115	25	65	245	2225	695	2435	798.5	6038M/C3+NU1038M/C3	NU1038M/C3
630L	1<U≤6.6 kV	≥4	400	2470	400	115	25	65	500.5	2545	745	2725	948.5	6044M/C3+NU1044M/C3	NU1044M/C3
630L	6.6<U≤11 kV	≥4	400	2470	400	115	25	65	393.5	2545	745	2725	948.5	6044M/C3+NU1044M/C3	NU1044M/C3
710L	1<U≤6.6 kV	4	400	2730	400	115	28	65	400	2730	1096	3290	980	FZLB18-225	FZLQ18-225
710L	6.6<U≤11 kV	4	400	2730	400	115	28	65	400	2730	1096	3290	980	FZLB18-225	FZLQ18-225
710L	1<U≤6.6 kV	≥6	400	2730	400	115	28	65	400	2730	891	3085	980	6048M/C3+NU1048M/C3	NU1048M/C3
710L	6.6<U≤11 kV	≥6	400	2730	400	115	28	65	400	2730	891	3085	980	6048M/C3+NU1048M/C3	NU1048M/C3

Note: Preliminary dimensions of standard configuration in the list.
 Note: Optional solutions e.g. NEMA oversize main terminal box, IM 1002, sleeve bearings, with BLD, etc. on request.
 Note: Sleeve bearings with oil circulation are default for 4 pole machines on frame size 710mm.
 Note: Accurate dimension drawing will be given on customized solution at the quotation phase.